



# MONTHLY MEMBERSHIP PROGRESS REPORT

District 4 L5

Results as of: 4/30/2014

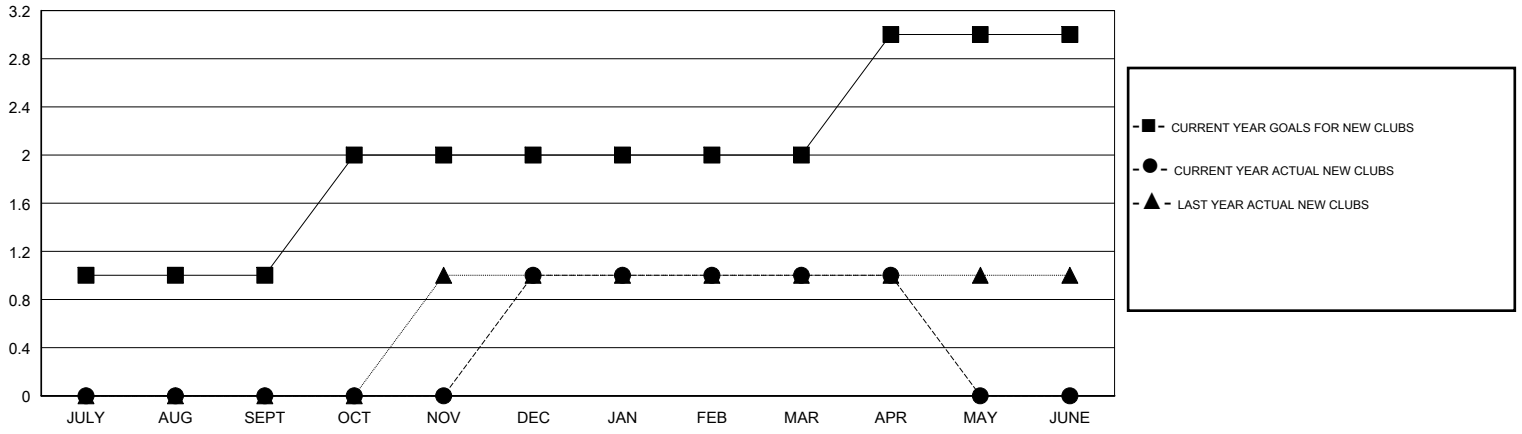
GMT: DANA BIGGS

LOCATION CALIFORNIA

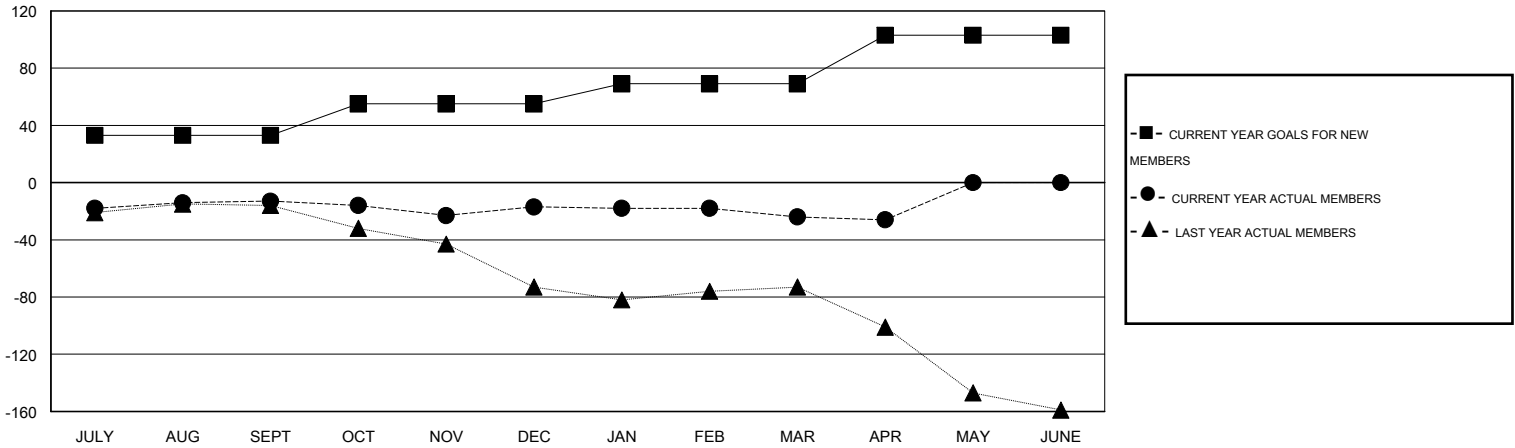
GMT CA 1

| Clubs                 |               |                  |                      |                      | Members               |                 |                            |                        |                      |
|-----------------------|---------------|------------------|----------------------|----------------------|-----------------------|-----------------|----------------------------|------------------------|----------------------|
| RESULTS FOR 2013-2014 |               |                  |                      |                      | RESULTS FOR 2013-2014 |                 |                            |                        |                      |
| QUARTER               | NEW CLUB GOAL | ACTUAL NEW CLUBS | ACTUAL DROPPED CLUBS | ACTUAL NET GAIN/LOSS | QUARTER               | NEW MEMBER GOAL | ACTUAL TOTAL MEMBERS ADDED | ACTUAL DROPPED MEMBERS | ACTUAL NET GAIN/LOSS |
| JULY/AUG/SEPT         | 1             | 0                | 0                    | 0                    | JULY/AUG/SEPT         | 33              | 28                         | 41                     | -13                  |
| OCT/NOV/DEC           | 1             | 1                | 0                    | 1                    | OCT/NOV/DEC           | 22              | 73                         | 77                     | -4                   |
| JAN/FEB/MAR           | 0             | 0                | 0                    | 0                    | JAN/FEB/MAR           | 14              | 35                         | 42                     | -7                   |
| APR/MAY/JUNE          | 1             | 0                | 0                    | 0                    | APR/MAY/JUNE          | 34              | 13                         | 15                     | -2                   |

GOALS AND ACTUAL NEW CLUBS CUMULATIVE



GOALS AND ACTUAL MEMBERS CUMULATIVE



|                        |  |                                  |              |
|------------------------|--|----------------------------------|--------------|
| DROPPED CLUBS: 0       | 29 CLUBS OF 42 ADDED 1 OR MORE NEW MEMBERS | <u>GENDER DISTRIBUTION</u>       |              |
| <u>DROPPED MEMBERS</u> |  | MALE                             | 642 (61.26%) |
| DECEASED               | 18   | FEMALE                           | 406 (38.74%) |
| CLUB CANCELLED         | 0  | <u>FAMILY UNIT MEMBERS</u> 261   |              |
| OTHER                  | 157  | <u>HEAD OF HOUSEHOLD</u> 127     |              |
| TOTAL                  | 175  | <u>NON-HEAD OF HOUSEHOLD</u> 134 |              |

[CLICK HERE FOR HEALTH ASSESSMENT DATA](#)